

**ALTOZ®**  
ALWAYS AHEAD®



**ZERO-TURN MOWERS**



# DIFFERENT BY DESIGN



*Northern Minnesota is the manufacturing center of some of the most exciting high-performance vehicles in the world. Housed in a state-of-the-art, 300,000+ square foot facility just outside of Greenbush, Minnesota, Altoz mowers are crafted by performance engineers with extensive histories in the lawn care, automotive and powersports industries.*

*Altoz quality is defined by superior components working in unison to deliver intuitive and responsive machines with a professional-grade cut to get even your toughest jobs done with speed and power.*









# ALWAYS AHEAD

*Altoz zero-turn mowers are an evolution of cutting-edge design, performance and exceptional comfort.*



## PERFORMANCE

Experience the power and control of smooth-running Hydro-Gear® transmissions and the most comprehensive lineup of engine options in the industry.

## COMFORT

Our 12-way adjustable suspension seat, Vibration Isolation System (VIS), 4-Point Engine Isolation System (EIS) and exclusive TorqFlex™ front suspension deliver a smooth ride and reduce ground chatter while you maintain a quicker, more efficient mowing pace.





## QUALITY

---

Our exclusive fabricated steel Aero Deck™ Cutting System is a solid .270 inches thick and features adjustable baffles for customizing the cut to match the grass types and conditions.

## STYLE

---

Take a closer look and you'll see the difference. It's the meticulous attention to detail that makes an Altoz a cut above.





*Pre-production model shown. Subject to change.*





# TRX ▶ SERIES

## ***TAKE ON THE TOUGH JOBS***

The Altoz TRX introduces first-of-its-kind technology with its rear-mounted track system. The TRX provides the traction, stability, and control professionals need to power over the thickest grass on the slopes and in the harshest conditions where traditional zero-turn mowers simply can't go. Conquering the terrain and never compromising the quality of the cut.



# TRX SERIES

## FOLDABLE PROTECTION SYSTEM

Our roll-over protection system can be easily folded down to avoid low hanging limbs.

## DUAL FUEL TANKS

Two 7-gallon tanks mean fewer stops for refueling.

## AERO DECK™ CUTTING SYSTEM

Equipped with Altoz's exclusive Aero Deck™ available in 61" or 66" widths.



Pre-production model shown. Subject to change.

## TOUGH TRACKS TREAD LIGHTLY

The patent-pending TRX track system delivers maximum traction for stability and low ground pressure for minimal compaction.



Kohler® and Vanguard™ 4-stroke engines are available in 33 and 37 hp engines with Fuel Injection.



The dual range transmission manages a wide variety of terrains and takes you to a top speed of 10 mph.





### **FLAT-FREE TIRES & TRACK SYSTEM**

*Power through the harshest conditions, even rough terrain and sharp debris, with flat-free tires and rear-mounted track system.*

*Patent-pending track system*

*The TRX's TorqFlex™ front suspension and rear torsional track suspension work together to bridge uneven terrain, delivering stability, a smooth ride and reduced operator fatigue.*



*12-way adjustable high-back suspension seat with arm rests delivers the industry's smoothest ride.*









# **XC** ▶ **SERIES**

## ***DYNAMIC DESIGN***

Iconic red bars highlight the powerful profile,  
and an unmatched performance delivers excitement.





## HEAVY-DUTY CHASSIS

Our C-Channel frame is laser-cut and welded from heavy gauge steel for maximum strength and rigidity.

## EASY ACCESS

Deck step with raised metal traction plate.

## AERO DECK™ CUTTING SYSTEM

Our exclusive Aero Deck™ is .270-inch fabricated steel and features anti-scalp wheels and fully adjustable baffles for a professional-grade cut every time.

## ANTI-SCALP WHEELS

Recessed and adjustable.



The TorqFlex™ Suspension system glides over tough terrain and isolates chassis and rider from ground chatter for greater rider comfort.



SmartTrac™ Monitoring System features a tachometer and resettable hour meter, with alerts for low oil pressure and overheating.



## **ENGINE ISOLATION SYSTEM VIBRATION ISOLATION SYSTEM**

4-Point Engine Isolation System (EIS) isolates and absorbs engine vibrations for greater rider comfort. 6-Point Vibration Isolation System (VIS) isolates seat and foot wells protect rider from ground vibrations.

## **DUAL FUEL TANKS**

Two 7-gallon tanks mean fewer stops for refueling.



12-way adjustable high-back suspension seat with arm rests delivers the industry's smoothest ride.

Heavy-duty, commercial Hydro-Gear® ZT-5400 dual range, cool-running transmissions.











# XP HD ▶ SERIES

## *DESIGNED FOR A FULL DAY'S WORK*

The Altoz XP HD is engineered to deliver reliability, comfort and a precise cut. It's a pro's machine, designed for people that rely on their equipment and demand nothing but perfection.



# XP HD SERIES



## EXTENDED OPERATION

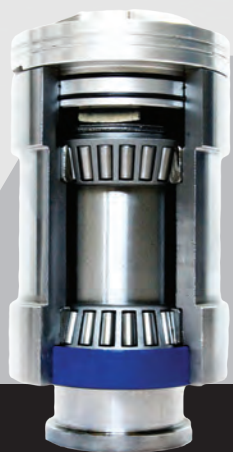
14-gallon fuel capacity provides extended cutting time.

## RUGGED CHASSIS

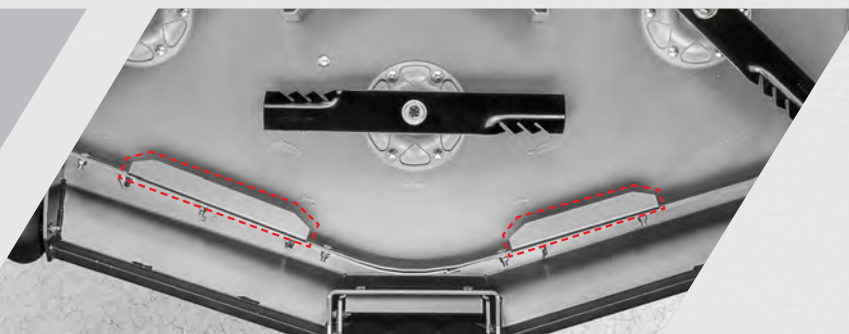
Heavy-duty, I-beam front end for durability, ultimate control and handling.

## ANTI-SCALP WHEELS

Recessed and adjustable.



Tapered roller caster bearings with a 1-1/4" shaft, combined with a 3/8" thick steel front wheel fork ensure lasting performance in demanding environments.



Our exclusive Aero Deck™ is .270-inch fabricated steel and features fully adjustable baffles enabling you to customize your cut to various grass conditions.



## **RIDER COMFORT AND CONVENIENCE**

Adjustable high-back suspension seat with arm rests delivers the industry's smoothest ride. A 12-volt power outlet and device storage compartment provides rider convenience.

## **DECK HEIGHT ADJUSTMENT**

Rotational deck height adjustment changes cutting height with the turn-of-a-dial.



Heat-dissipating aluminum deck spindle housings with four sealed bearings per spindle operate at lower temperatures for extreme strength and durability.



Commercial-grade Hydro-Gear® 4400 transmissions ensure smooth, reliable and responsive operation.









# **XE** ▶ **SERIES**

## ***A ZERO-TURN WITH ZERO COMPROMISE***

Heavy on performance and big on value, the XE models are built to endure. They're rugged, reliable and a tremendous value.





## DUAL FUEL TANKS

Two 5-gallon fuel tanks mean refueling less often.

## LOW IMPACT

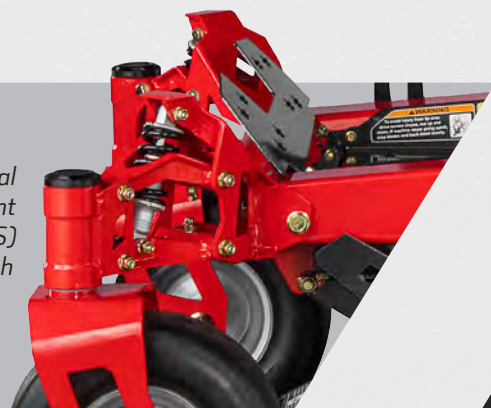
Tires designed to lessen terrain impact and provide a smoother ride.

## RUGGED CHASSIS

C-Channel frame rails with formed, laser-cut and welded heavy-gauge steel for maximum strength and rigidity.



The optional Altoz Independent Front Suspension (IFS) smooths out rough terrain for superb comfort and control.



Our roll-over protection system can be easily folded down to avoid low hanging limbs.



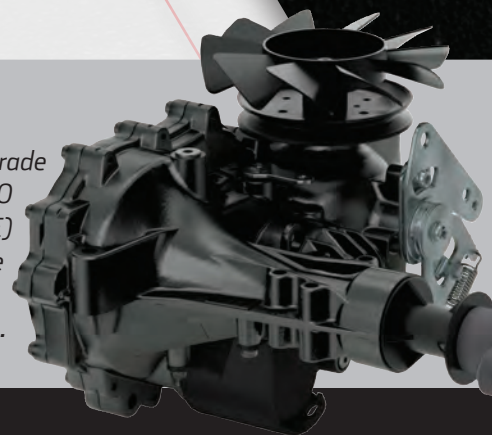
## RIDER COMFORT

Comfort seat with high back, arm rests and fore and aft adjustment.



Our exclusive fabricated steel Aero Deck™ features anti-scalp wheels and fully adjustable baffles to customize your cut for various grass conditions.

Commercial-grade Hydro-Gear® 3400 (XE HD) and 3200 (XE) transmissions ensure smooth, reliable and responsive operation.











# **XR** ▶ **SERIES**

## ***FOR THE PERFECTIONIST WITH ACREAGE***

The Altoz XR is the perfect mower for discerning homeowners who take as much pride in their equipment as they do in their lawn.





## PRECISE HANDLING

Cut with speed and precision around trees, flowerbeds and other obstacles with the XR's responsive steering.

## FRONT SUSPENSION

Shown with optional Independent Front Suspension (IFS) for a smooth ride.

## AERO DECK™ CUTTING SYSTEM

48" or 54" signature Deep-Deck design with baffles creates an optimal vacuum for maximum grass lift, resulting in an exceptional cut.

## BUILT TO COMMERCIAL STANDARDS

With its laser-cut steel chassis, fabricated cutting deck and heat dissipating deck spindles, the XR is built to perform.



Formed, laser-cut and welded heavy-gauge steel frame for maximum strength and rigidity.



Every XR and XE model features easy-to-operate controls, electric start and an hour meter.

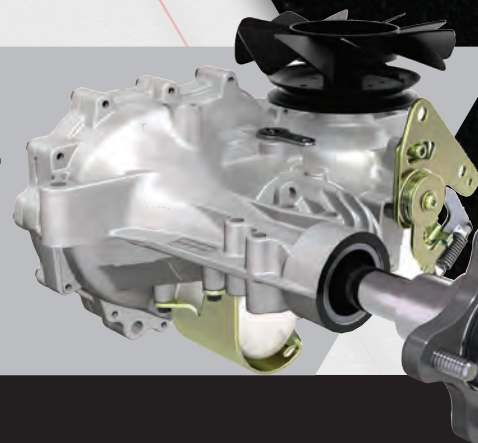


### INCREASED VISIBILITY

Low-profile front frame viewpoint allows for improved operator sight.



Hydro-Gear®  
ZT-3100 transmission  
for smooth handling  
and reliability.



Kohler, Honda and Kawasaki engines  
available in 22 and 23 hp output.

Shown with optional Independent Front Suspension (IFS). Not all features are available on all models.  
Check the specifications table or ask your dealer for details.

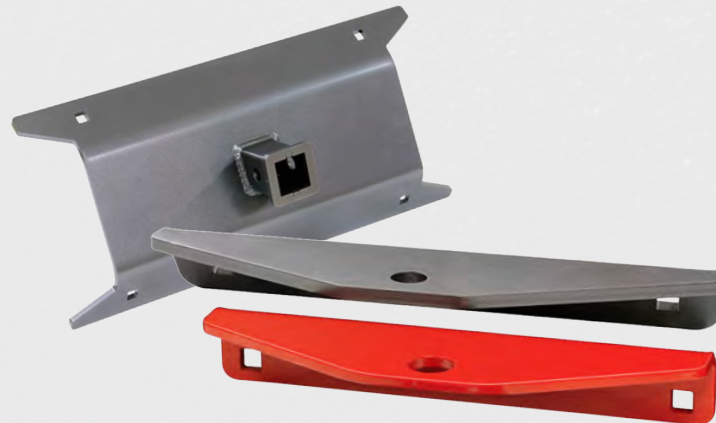


# ACCESSORIES



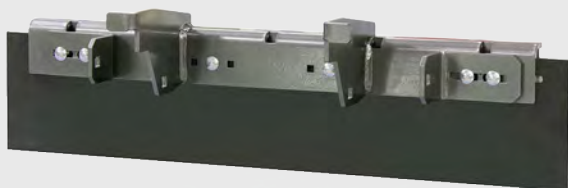
## ▲ COLLECTION SYSTEM WITH DUMP BOX

Large-capacity collection system is an effective and efficient way to collect grass clippings and leaves. The dump box hopper holds up to 12 cubic feet and allows the operator to release contents right from the mower seat.



## ▲ HITCH & RECEIVER HITCH KITS

Our standard hitch features a 5/8" opening for drop pin (available for all models). Our super-strong receiver hitch features standard 1-1/4" x 1-1/4" trailer hitch receiver.



## ◀ LAWN STRIPING KIT

Stripe or create more complex patterns in the lawns you mow. Includes flexible rubber striper and all mounting hardware.

## ▶ LARGE-CAPACITY COLLECTION SYSTEM

Large-capacity collection system is an effective and efficient way to collect grass clippings and leaves. Capacity of 15 cubic feet on XC and XP HD models; 10 cubic feet on XE and XR models.



Operator-controlled discharge cover allows you to quickly open and close the outlet while mowing.



Lighting Kit includes 2 LED lights built in an aluminum, shock-proof, waterproof casing. Each light provides 950 lumens with a spot beam of 25 degrees.





— “ —

***The Altoz  
is my yard-work  
sports car.***

— A happy Altoz customer  
Lakeland, Florida



# MODEL SPECIFICATIONS

## POWERED BY OPTIONS

**HONDA**  
ENGINES

**KOHLER**  
Engines

**Kawasaki**  
Engines



	XR SERIES					
Model	XR 480	XR 480	XR 480	XR 540	XR 540	XR 540
Engine	Kawasaki FR	Kohler 7000	Honda GXV690	Kawasaki FR	Kohler 7000	Honda GXV690
hp	23	22	22	23	22	22
Displacement	726 cc	725 cc	688 cc	726 cc	725 cc	688 cc
Deck Width	48"	48"	48"	54"	54"	54"
Transmission	Hydro-Gear ZT-3100	Hydro-Gear ZT-3100	Hydro-Gear ZT-3100	Hydro-Gear ZT-3100	Hydro-Gear ZT-3100	Hydro-Gear ZT-3100
Fuel Capacity	5 gallons	5 gallons	5 gallons	5 gallons	5 gallons	5 gallons
Rear Tire Size	20"	20"	20"	20"	20"	20"
Speed	8 mph	8 mph	8 mph	8 mph	8 mph	8 mph
Instruments	Hour Meter	Hour Meter	Hour Meter	Hour Meter	Hour Meter	Hour Meter
Independent Front Suspension	Accessory	Accessory	Accessory	Accessory	Accessory	Accessory
Seat	High-back adjustable seat					
Warranty*	3-Year/400 Hours 1-Year No Hour Limitation					

All specifications and features are subject to change, see dealer for details.  
Engine horsepower and torque information are provided by the engine manufacturer to be used for comparison purposes only. Actual operating horsepower and torque will be less.  
Refer to the engine manufacturer's website for additional information.



XE SERIES							XE HD SERIES		
XE 480	XE 480	XE 540	XE 540	XE 540	XE 610	XE 610	XE 480 HD	XE 540 HD	XE 610 HD
Kawasaki FS	Honda GXV690	Kawasaki FS	Kohler Confidant	Honda GXV690	Kohler Confidant	Kawasaki FS	Kawasaki FX	Kawasaki FX	Kawasaki FX
24	22	24	25	22	25	24	27	27	27
726 cc	688 cc	726 cc	747 cc	688 cc	747 cc	726 cc	852 cc	852 cc	852 cc
48"	48"	54"	54"	54"	61"	61"	48"	54"	61"
Hydro-Gear ZT-3200	Hydro-Gear ZT-3200	Hydro-Gear ZT-3200	Hydro-Gear ZT-3200	Hydro-Gear ZT-3200	Hydro-Gear ZT-3200	Hydro-Gear ZT-3200	Hydro-Gear ZT-3400	Hydro-Gear ZT-3400	Hydro-Gear ZT-3400
10 gallons	10 gallons	10 gallons	10 gallons	10 gallons	10 gallons	10 gallons	10 gallons	10 gallons	10 gallons
22"	22"	22"	22"	22"	22"	22"	23"	23"	23"
9 mph	9 mph	9 mph	9 mph	9 mph	9 mph	9 mph	10 mph	10 mph	10 mph
Hour Meter	Hour Meter	Hour Meter	Hour Meter	Hour Meter	Hour Meter	Hour Meter	Hour Meter	Hour Meter	Hour Meter
Accessory	Accessory	Accessory	Accessory	Accessory	Accessory	Accessory	Accessory	Accessory	Accessory
High-back adjustable seat with arm rests							High-back adjustable suspension seat with arm rests		
3-Year/600 Hours 1-Year No Hour Limitation							3-Year/400 Hours 1-Year No Hour Limitation		

\*See dealer for warranty details.  
For additional information, go to [Altoz.com](http://Altoz.com)



# MODEL SPECIFICATIONS

	XP HD SERIES								
Model	XP 540 HD	XP 610 HDi	XP 610 HD	XP 610 HDi	XP 660 HDi	XP 660 HD	XP 660 HDi	XC 540 S	XC 610 S
Engine	Kawasaki FX	Vanguard EFI	Kawasaki FX	Kohler Command PRO EFI	Vanguard EFI	Kawasaki FX	Kohler Command PRO EFI	Kawasaki FX	Kawasaki FX
hp	27	28	31	33	28	31	33	27	31
Displacement	852 cc	810 cc	921 cc	824 cc	810 cc	921 cc	824 cc	852 cc	921 cc
Deck Width	54"	61"	61"	61"	66"	66"	66"	54"	61"
Transmission	Hydro-Gear ZT-4400	Hydro-Gear ZT-4400	Hydro-Gear ZT-4400	Hydro-Gear ZT-4400	Hydro-Gear ZT-4400	Hydro-Gear ZT-4400	Hydro-Gear ZT-4400	Hydro-Gear ZT-4400	Hydro-Gear ZT-4400
Fuel Capacity	14 gallons	14 gallons	14 gallons	14 gallons	14 gallons	14 gallons	14 gallons	14 gallons	14 gallons
Rear Tire Size	24"	24"	24"	24"	24"	24"	24"	26"	26"
Speed	11 mph	11 mph	11 mph	11 mph	11 mph	11 mph	11 mph	12 mph	12 mph
Instruments	Hour Meter	Hour Meter	Hour Meter	Hour Meter	Hour Meter	Hour Meter	Hour Meter	Hour Meter	Hour Meter
TorqFlex™ Suspension	—	—	—	—	—	—	—	—	—
VIS	—	—	—	—	—	—	—	▲	▲
EIS	—	—	—	—	—	—	—	—	—
Adjustable Suspension Seat	▲	▲	▲	▲	▲	▲	▲	▲	▲
Warranty*	3 Years/1500 Hours First 2-Years No Hour Limitation								



XC SERIES									TRX SERIES	
XC 610 Si	XC 720 S	XC 540 Z	XC 540 Zi	XC 610 Z	XC 610 Zi	XC 610 Zi	XC 720 Z	XC 720 Zi	TRX 610 i	TRX 660 i
Kohler Command PRO EFI	Kawasaki FX	Kawasaki FX	Kohler Command PRO EFI	Kawasaki FX	Kohler Command PRO EFI	Vanguard EFI	Kawasaki FX	Vanguard EFI	Kohler & Command Pro EFI	Vanguard EFI
33	35	27	27	31	33	33	35	37	33	37
824 cc	999 cc	852 cc	824 cc	921 cc	824 cc	896 cc	999 cc	993 cc	824 cc	993 cc
61"	72"	54"	54"	61"	61"	61"	72"	72"	61"	66"
Hydro-Gear ZT-4400	Hydro-Gear ZT-4400	Hydro-Gear ZT-5400 High/Low	Hydro-Gear ZT-5400 High/Low	Hydro-Gear ZT-5400 High/Low	Hydro-Gear ZT-5400 High/Low	Hydro-Gear ZT-5400 High/Low	Hydro-Gear ZT-5400 High/Low	Hydro-Gear ZT-5400 High/Low	Hydro-Gear ZT-5400 High/Low	Hydro-Gear ZT-5400 High/Low
14 gallons	14 gallons	14 gallons	14 gallons	14 gallons	14 gallons	14 gallons	14 gallons	14 gallons	14 gallons	14 gallons
26"	26"	26"	26"	26"	26"	26"	26"	26"	N/A	N/A
12 mph	12 mph	19 mph	19 mph	19 mph	19 mph	19 mph	19 mph	19 mph	10 mph	10 mph
Hour Meter	Hour Meter	SmarTrac	SmarTrac	SmarTrac	SmarTrac	SmarTrac	SmarTrac	SmarTrac	Hour Meter	Hour Meter
—	—	—	▲	▲	▲	▲	▲	▲	▲	▲
▲	▲	▲	▲	▲	▲	▲	▲	▲		
—	—	▲	▲	▲	▲	▲	▲	▲		
▲	▲	▲	▲	▲	▲	▲	▲	▲	▲	▲
3 Years/1500 Hours First 2-Years No Hour Limitation									3 Year Unlimited Engine 2 Year Unlimited Transmission 1 Year Manufacturer	

\*See dealer for warranty details.





## YOUR SEARCH ENDS HERE

Looking for power, precision and the best-looking lawn on the block? Look no further. Your local Altoz dealer has a machine with your name on it... and ours. Our dealers are your source for Altoz accessories and outstanding customer service.

► 1-855-782-5869

Altoz, Inc.  
20502 160th Street  
Greenbush, MN 56726

Tel. 1-218-782-5869  
Fax. 1-218-782-5880

**Altoz.com**



©2016 Altoz, Inc. All information contained within this publication is based on the latest product information available at the time of publication. Because Altoz, Inc. makes constant improvements in the design and quality of its products, some minor discrepancies may result between the actual machine and the information presented in this brochure. Altoz reserves the right to change specifications and design without notice. Depictions of operation are intended for reference only. Always wear the proper personal protective gear and operate within your capability. No liability can be accepted for omissions or inaccuracies. Engine horsepower and torque information are provided by the engine manufacturer to be used for comparison purposes only. Actual operating horsepower and torque will be less. Refer to the engine manufacturer's website for additional information. Altoz, the Altoz logo, TorqFlex, Aero Deck and SmarTrac are trademarks of Altoz, Inc. Other trademarks are the property of their respective owners. Printed in the USA.